

CONNECT INSTANTLY | PREVENT SPILLS | IMPROVE PROCESS

Efficient Fuel Rail Leak Testing

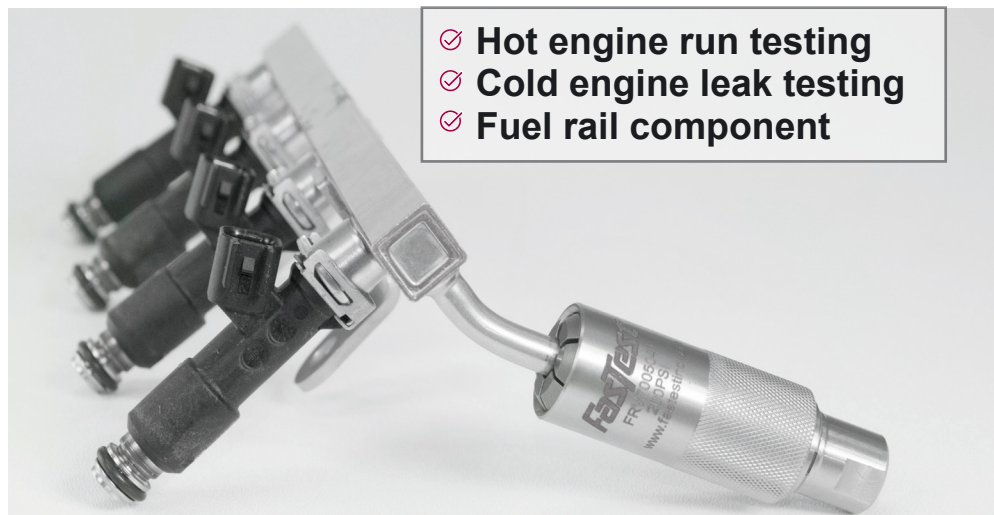
Features:

- **Instant push/pull connection** improves throughput
- **Integrated stop valve** prevents flow of fuel when disconnected
- **High flow design** for optimal engine run testing
- **Improved safety** and environmental conditions
- **Stainless steel components** provide a robust, durable product



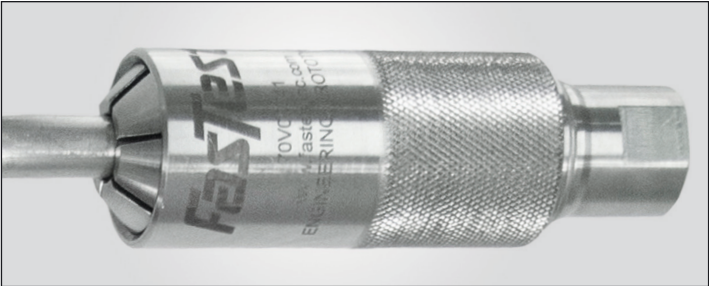
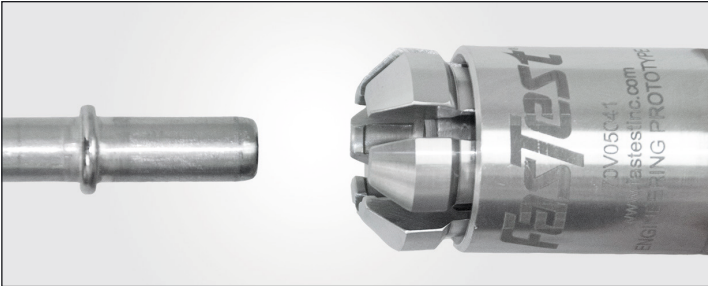
The 70 Series Fuel Rail Advantage

Fits SAE J2044
Standard Sizes:



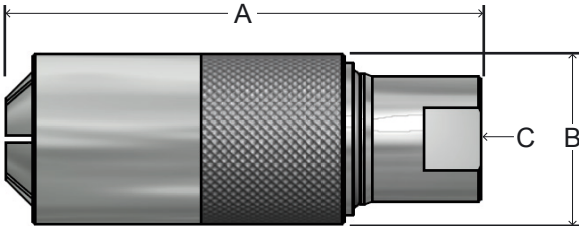
- ✓ Hot engine run testing
- ✓ Cold engine leak testing
- ✓ Fuel rail component

Sleeve Actuation



Specifications:

Materials Stainless steel sleeve and components
Main seal. 70 Durometer Buna N/Nitrile
Fits SAE J2044 standard fuel rail
Inline NPT termination port



Part Number	Stop Valve	SAE J2044 Size	Seal Dia.	Bead Dia.	Rated PSI	Flow (Cv)	(A)	(B)	Termination Port (C)	Main Seal Pack
FRV7004041	Yes	1/4"	.248" 6.30 mm	.344" 8.75 mm	200	.38	3.02" 76.71 mm	.99" 25.15 mm	1/4" NPT	S1106B70
FRV7005041	Yes	5/16"	.310" 7.89 mm	.432" 10.98 mm	200	.45	3.02" 76.71 mm	.99" 25.15 mm	1/4" NPT	S1108B70
FRV7006061	Yes	3/8"	.374" 9.49 mm	.509" 12.94 mm	200	.54	3.30" 83.82 mm	1.18" 29.97 mm	3/8" NPT	S1109B70
FR7004041	No	1/4"	.248" 6.30 mm	.344" 8.75 mm	750	.69	3.02" 76.71 mm	.99" 25.15 mm	1/4" NPT	S1106B70
FR7005041	No	5/16"	.310" 7.89 mm	.432" 10.98 mm	750	1.25	3.02" 76.71 mm	.99" 25.15 mm	1/4" NPT	S1108B70
FR7006061	No	3/8"	.374" 9.49 mm	.509" 12.94 mm	750	1.46	3.30" 83.82 mm	1.18" 29.97 mm	3/8" NPT	S1109B70

Repair kits are found online at fastestinc.com

Product Safety:

All FasTest products have been designed with safety in mind, however, it is the responsibility of the product users to design each process in such a way to avoid mishaps that can cause physical hazard or property loss. Secondary restraints such as safety chains, shields, cages or fixtures are all good choices depending on the application. FasTest can recommend or assist you in clarifying potential hazards of your application.